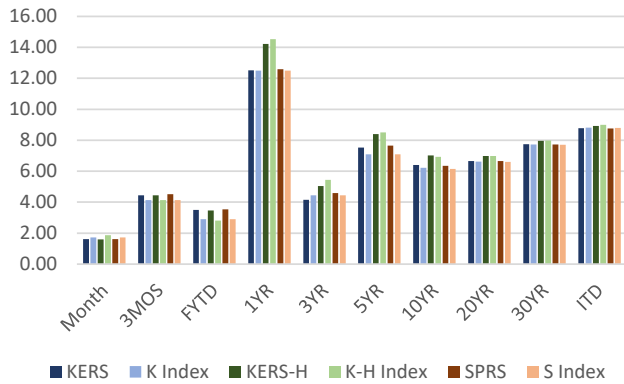


K,KH,S Pension Performance - 08/31/24

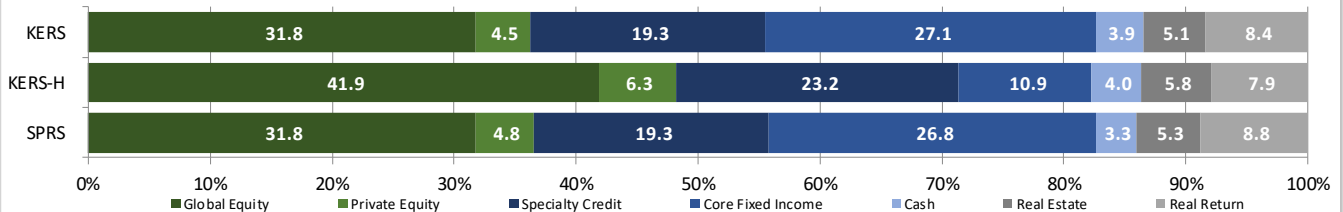


KERS, KERS-HAZ, & SPRS - PENSION FUND - PLAN NET RETURNS - 08/31/24

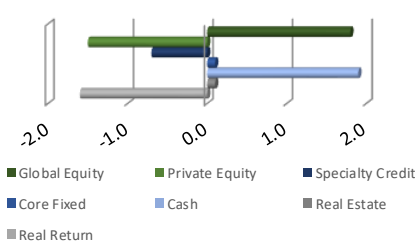
Plan	Market Value	Month	3 Months	Fiscal YTD	1 Year	3 Years	5 Years	10 Years	20 Years	30 Years	ITD
<b>KERS</b>	<b>4,413,883,547.98</b>	<b>1.62</b>	<b>4.45</b>	<b>3.50</b>	<b>12.52</b>	<b>4.15</b>	<b>7.52</b>	<b>6.40</b>	<b>6.66</b>	<b>7.74</b>	<b>8.77</b>
KY Ret. KERS Plan IPS Index		1.72	4.13	2.91	12.50	4.45	7.09	6.23	6.62	7.73	8.81
<b>KERS- H</b>	<b>1,060,672,889.59</b>	<b>1.60</b>	<b>4.45</b>	<b>3.46</b>	<b>14.21</b>	<b>5.05</b>	<b>8.40</b>	<b>7.02</b>	<b>6.99</b>	<b>7.96</b>	<b>8.93</b>
KY Ret. KERS Haz Plan IPS Index		1.87	4.14	2.81	14.52	5.45	8.50	6.92	6.99	7.98	9.00
<b>SPRS</b>	<b>676,536,338.42</b>	<b>1.61</b>	<b>4.51</b>	<b>3.54</b>	<b>12.59</b>	<b>4.58</b>	<b>7.65</b>	<b>6.35</b>	<b>6.65</b>	<b>7.73</b>	<b>8.76</b>
KY Ret. SPRS Plan IPS Index		1.72	4.13	2.91	12.50	4.45	7.09	6.15	6.60	7.71	8.80

KPPA PENSION FUND UNIT - NET RETURNS - 08/31/24 - PROXY PLAN ASSET PERFORMANCE

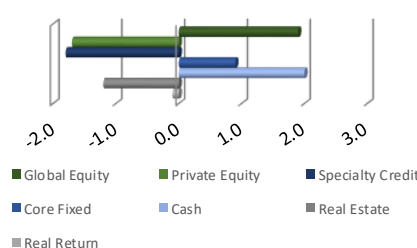
Structure	Month	3 Months	Fiscal YTD	1 Year	3 Years	5 Years	10 Years	20 Years	30 Years	ITD
<b>PUBLIC EQUITY</b>	<b>2.32</b>	<b>5.99</b>	<b>4.71</b>	<b>22.08</b>	<b>4.59</b>	<b>11.61</b>	<b>8.49</b>	<b>8.10</b>	<b>9.05</b>	<b>10.45</b>
MSCI ACWI	2.54	6.51	4.19	23.44	5.45	11.83	8.46	8.02	8.88	10.34
<b>PRIVATE EQUITY</b>	<b>0.27</b>	<b>0.60</b>	<b>0.59</b>	<b>4.06</b>	<b>7.51</b>	<b>11.65</b>	<b>11.57</b>	<b>10.82</b>	<b>11.38</b>	<b>11.38</b>
Russell 3000 + 3%(Qtr Lag)	4.90	4.31	0.70	30.58	10.85	18.03	15.20	12.77		12.62
<b>SPECIALTY CREDIT</b>	<b>0.82</b>	<b>3.24</b>	<b>1.60</b>	<b>11.95</b>	<b>6.80</b>	<b>6.63</b>				<b>6.64</b>
50% BB US HY / 50% Morningstar LSTA Lev'd Ln	1.13	3.12	2.46	11.24	4.53	5.11				4.96
<b>CORE FIXED INCOME</b>	<b>1.68</b>	<b>5.00</b>	<b>3.79</b>	<b>8.10</b>	<b>1.32</b>	<b>2.29</b>	<b>2.73</b>			<b>2.94</b>
Bloomberg US Aggregate	1.44	4.79	3.81	7.30	-2.11	-0.04	1.64			1.93
<b>CASH</b>	<b>0.45</b>	<b>1.33</b>	<b>0.89</b>	<b>5.50</b>	<b>3.27</b>	<b>2.28</b>	<b>1.76</b>	<b>1.92</b>	<b>2.76</b>	<b>3.37</b>
FTSE Treasury Bill-3 Month	0.46	1.38	0.93	5.65	3.49	2.33	1.62	1.57	2.41	3.00
<b>REAL ESTATE</b>	<b>0.62</b>	<b>0.41</b>	<b>1.41</b>	<b>-7.38</b>	<b>3.27</b>	<b>6.61</b>	<b>7.97</b>	<b>7.14</b>	<b>6.09</b>	<b>6.21</b>
NCREIF NFI-ODCE Net 1 Qtr in Arrears Index^	0.00	-2.58	0.00	-12.00	2.47	2.56	5.82	6.00	7.12	5.94
<b>REAL RETURN</b>	<b>1.29</b>	<b>4.90</b>	<b>3.69</b>	<b>14.69</b>	<b>10.78</b>	<b>9.24</b>	<b>5.51</b>			<b>5.74</b>
US CPI +3%	0.36	1.05	0.64	5.89	7.11	7.05	4.13			4.29



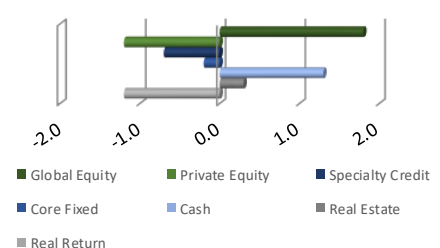
KERS PEN Relative Weights



KERS-HAZ PEN Relative Weights



SPRS PEN Relative Weights

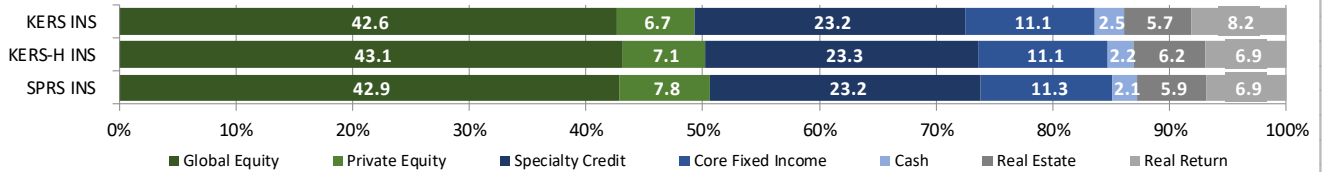


KERS INS, KERS-HAZ INS, SPRS INS - INSURANCE FUND - PLAN NET RETURNS - 08/31/24

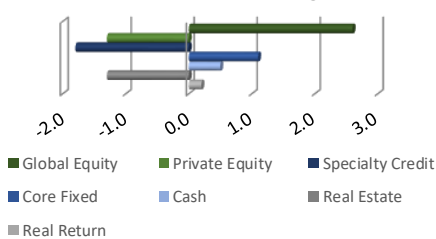
Plan	Market Value	Month	3 Months	Fiscal YTD	1 Year	3 Years	5 Years	10 Years	20 Years	30 Years	ITD
<b>KERS INS</b>	<b>1,735,612,151.10</b>	<b>1.66</b>	<b>4.57</b>	<b>3.51</b>	<b>14.22</b>	<b>5.14</b>	<b>8.49</b>	<b>6.84</b>	<b>6.70</b>	<b>7.09</b>	<b>7.43</b>
KY Ins. KERS Plan IPS Index		1.87	4.14	2.81	14.52	5.58	8.39	6.90	6.88	7.47	7.75
<b>KERS - H INS</b>	<b>685,733,465.39</b>	<b>1.54</b>	<b>4.21</b>	<b>3.18</b>	<b>13.95</b>	<b>5.43</b>	<b>8.47</b>	<b>7.06</b>	<b>6.85</b>	<b>7.19</b>	<b>7.51</b>
KY Ins. KERS Haz Plan IPS Index		1.87	4.14	2.81	14.52	5.58	8.32	6.89	6.87	7.46	7.75
<b>SPRS INS</b>	<b>278,451,204.56</b>	<b>1.54</b>	<b>4.17</b>	<b>3.20</b>	<b>13.85</b>	<b>5.46</b>	<b>8.63</b>	<b>7.25</b>	<b>6.93</b>	<b>7.25</b>	<b>7.55</b>
KY Ins. SPRS Plan IPS Index		1.87	4.14	2.81	14.52	5.58	8.32	6.91	6.88	7.47	7.75

KPPA INSURANCE FUND UNIT - NET RETURNS - 08/31/24 - PROXY PLAN ASSET PERFORMANCE

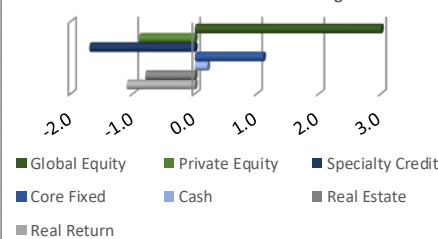
Structure	Month	3 Months	Fiscal YTD	1 Year	3 Years	5 Years	10 Years	20 Years	30 Years	ITD
<b>PUBLIC EQUITY</b>	<b>2.29</b>	<b>5.91</b>	<b>4.67</b>	<b>21.90</b>	<b>4.54</b>	<b>11.56</b>	<b>8.54</b>	<b>7.94</b>		<b>8.93</b>
MSCI ACWI	2.54	6.51	4.19	23.44	5.44	11.81	8.46	7.82		8.79
<b>PRIVATE EQUITY</b>	<b>0.24</b>	<b>1.18</b>	<b>0.41</b>	<b>6.55</b>	<b>11.95</b>	<b>11.94</b>	<b>12.93</b>	<b>11.14</b>		<b>10.70</b>
Russell 3000 + 3%(Qtr Lag)	4.90	4.31	0.70	30.58	10.85	18.03	15.20	12.51		12.20
<b>SPECIALTY CREDIT</b>	<b>0.88</b>	<b>3.31</b>	<b>1.66</b>	<b>12.17</b>	<b>7.04</b>	<b>6.67</b>				<b>6.57</b>
50% BB US HY / 50% Morningstar LSTA Lev'd Ln	1.13	3.12	2.46	11.24	4.53	5.11				4.96
<b>CORE FIXED INCOME</b>	<b>1.66</b>	<b>4.99</b>	<b>3.77</b>	<b>7.98</b>	<b>1.14</b>	<b>2.10</b>	<b>2.45</b>			<b>2.67</b>
Bloomberg US Aggregate	1.44	4.79	3.81	7.30	-2.11	-0.04	1.64			1.93
<b>CASH</b>	<b>0.45</b>	<b>1.33</b>	<b>0.89</b>	<b>5.53</b>	<b>3.26</b>	<b>2.18</b>	<b>1.62</b>	<b>1.77</b>		<b>2.56</b>
FTSE Treasury Bill-3 Month	0.46	1.38	0.93	5.65	3.49	2.33	1.62	1.57		2.47
<b>REAL ESTATE</b>	<b>0.61</b>	<b>0.12</b>	<b>1.30</b>	<b>-7.58</b>	<b>3.06</b>	<b>6.47</b>	<b>8.01</b>			<b>8.19</b>
NCREIF NFI-ODCE Net 1 Qtr in Arrears Index^	0.00	-2.58	0.00	-12.00	2.47	2.56	5.82			4.82
<b>REAL RETURN</b>	<b>1.12</b>	<b>4.28</b>	<b>3.41</b>	<b>12.78</b>	<b>9.25</b>	<b>8.57</b>	<b>5.16</b>			<b>5.35</b>
US CPI +3%	0.36	1.05	0.64	5.89	6.68	7.03	4.19			4.34



KERS Insurance Relative Weights



KERS-HAZ Insurance Relative Weights



SPRS Insurance Relative Weights

